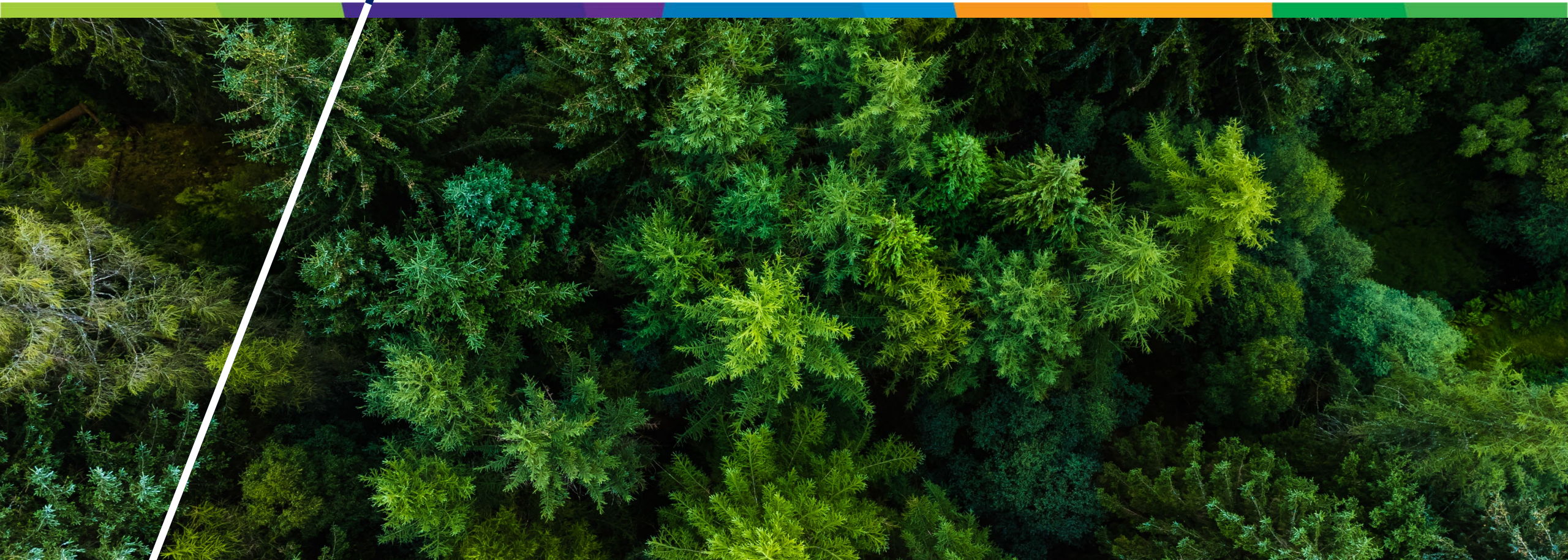




CCS Development at ADM SARL Legislative Ag Chairs Summit

January 4, 2025



Enduring Global Trends

Food Security



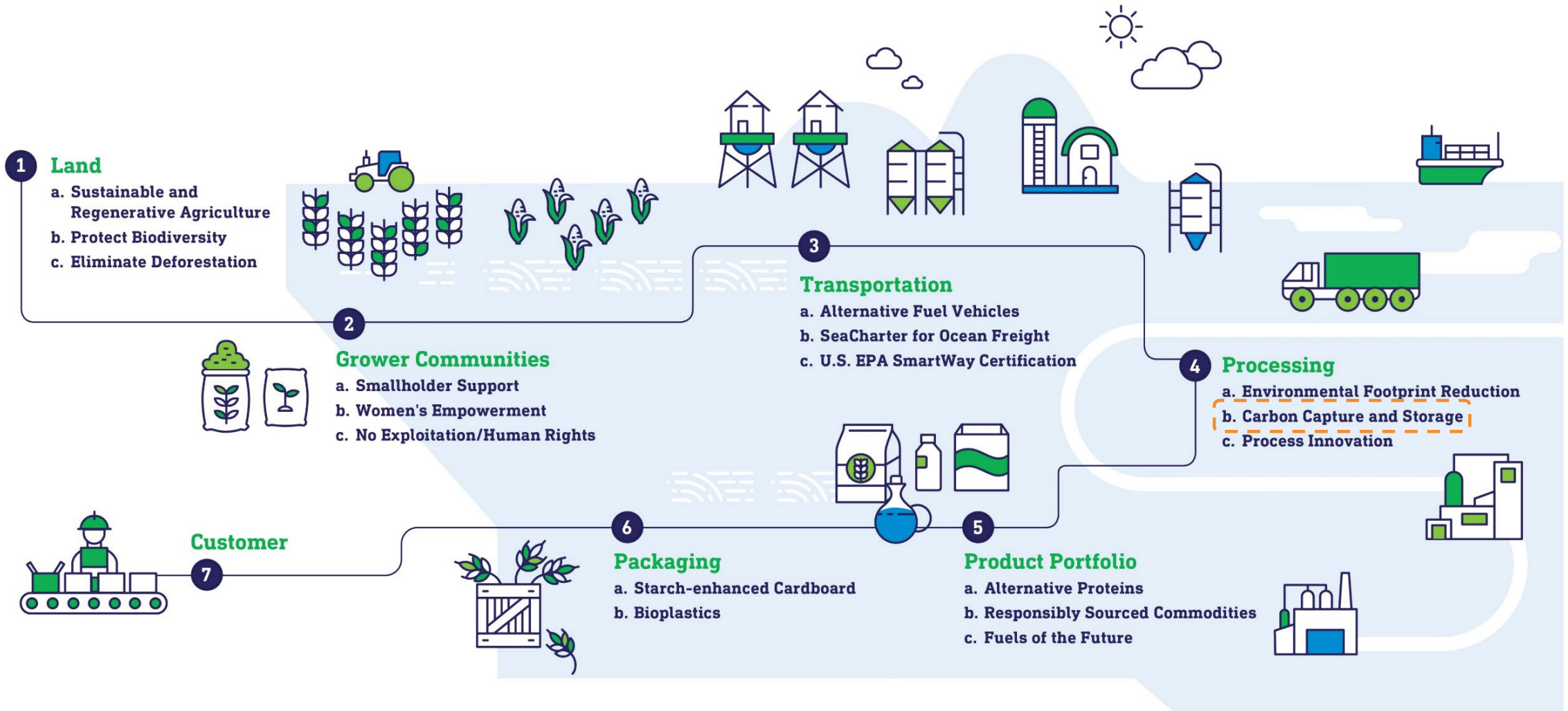
Health and Well-being



Sustainability



Building a More Sustainable Value Chain



Decatur is an ideal location for CCS

- The Illinois Basin covers roughly 110,000 square miles extending throughout most of Illinois and large parts of Indiana and Kentucky.
- Decatur is located near the center of this geologic formation.
- The Illinois Basin features the Mt. Simon Sandstone Saline Reservoir about 1.25 miles underground, as well as several layers of shale rock, making it ideal for CCS storage with a potential storage capacity of 27 to 109 billion metric tons of CO₂.
- ADM has been successfully operating CCS wells in Decatur for more than a decade. To date, we've injected more than 4.5 million metric tons of CO₂ safely underground.



ADM's CCS Well Geography

Lake Decatur, ~22ft

Domestic Water Wells, ~200ft

Impermeable shale Layers:

New Albany Shale ~2,050 – 2,200ft

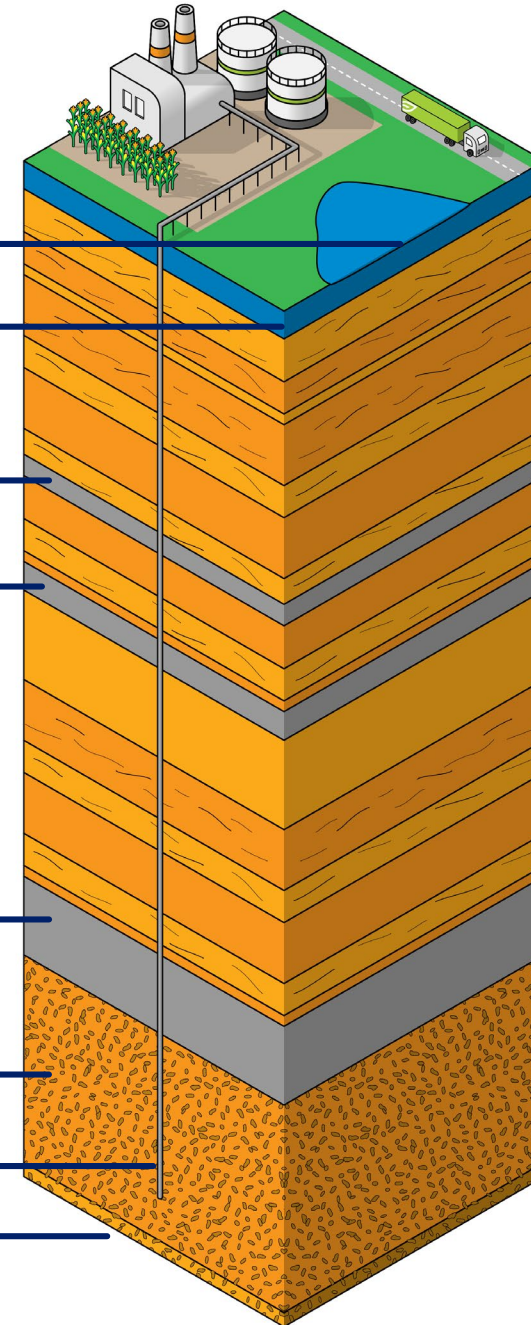
Maquoketa Shale ~2,600 - 2,800ft

Eau Claire Shale ~5,000 – 5,550ft

Mt. Simon Reservoir/C02 Storage, ~5,550 – 7,000ft

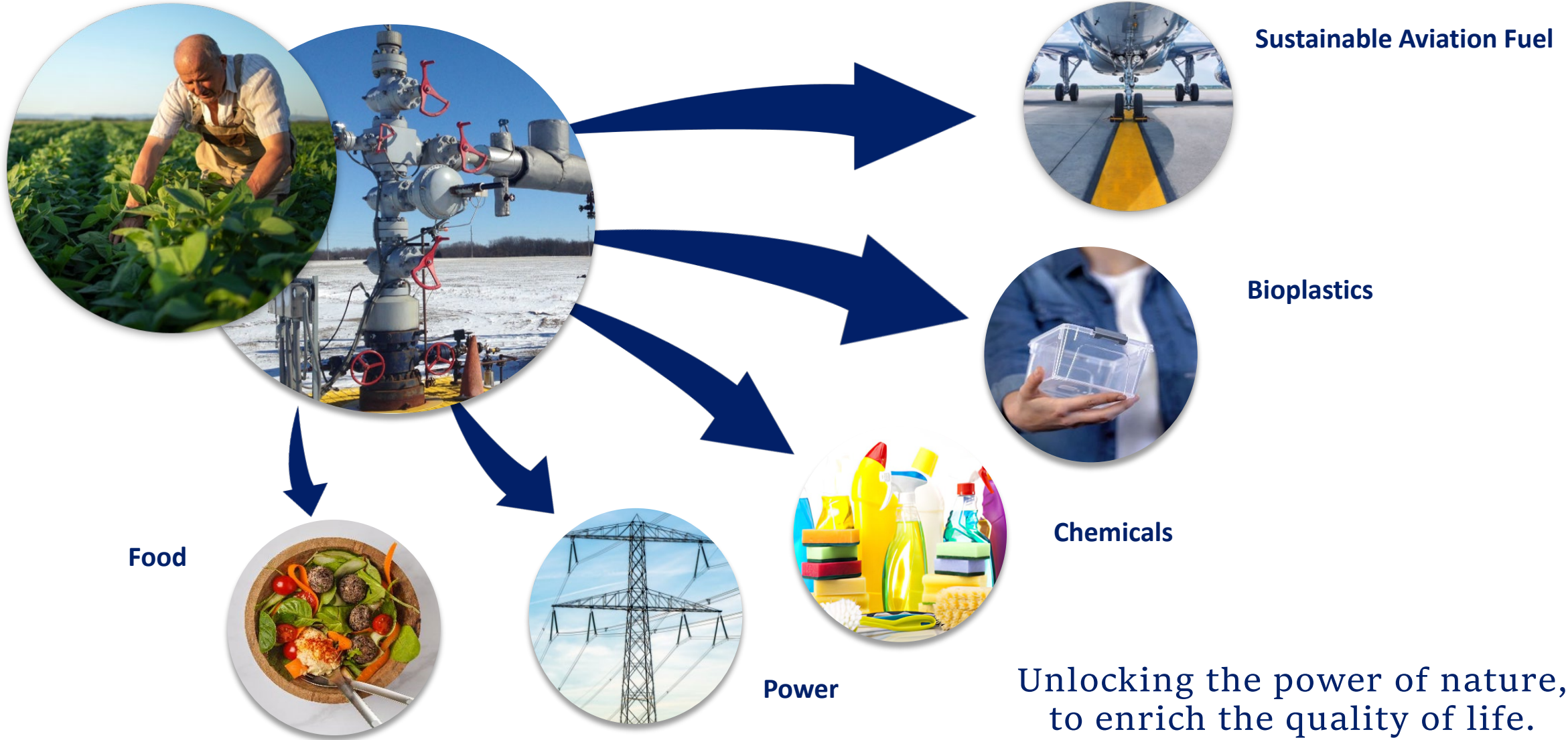
ADM CCS Well, ~6,700ft

Precambrian Basement, ~7,000ft



Enable a Transition to Lower Carbon Intensity Products

CCS can lower the carbon emissions sent to the atmosphere generating during the manufacturing of plant based materials making them a more attractive alternative to petroleum based products.



Unlocking the power of nature,
to enrich the quality of life.

Thank You

